

SONG TO SELF



ABOUT WOLF

WOLF, an artistic collective in Jaipur, works with scrap, waste and found discards to create new worlds that you are invited to share, get enchanted by and use the experience to make much needed change.



SONG TO SELF



14th century Kashmiri mystic, Lal Ded, affectionately called Lalla, is the heart and voice of SONG TO SELF as it traces her path through fields and forests towards enlightenment. It honours ancient feminine wisdom. It leads us inwards by tuning in to the body and breath.

These songs of awareness are translated in Wolf's inimitable style - using scrap, discards and found objects from Kashmir and around the world.

As we journey through a particularly dark and tumultuous era, this seems a relevant time to reawaken the Lalla in each one of us.

SONG TO SELF is a hope for a better world.



CURATORIAL NOTE

WOLF's journey as artists mirrors their journey through life, and every experience and question becomes the seed for an art awakening! The seismic shifts in the world at large drove them to seek quietude and fresh air - off the beaten track, in Kashmir; this is where they 'met' and became enraptured with Lad Ded.

It doesn't take much to draw the parallels in what the two believe and seek, 700 years apart... It is today's interpretation of a 14th century thought that makes it become a living reality.

This is our eighth show together, and like each one before, the path they tread becomes one that you want so much to discover, and one that always takes you to a step higher within yourself.

Srila Chatterjee
October 2022



LALLA

60H 22D 36W (INCHES)

Lalla, Lal Ded : whose words have been woven into the language of Kashmir through oral traditions, who roamed naked, whose profound words penetrate all levels of intellect, who spoke of her own enlightenment - of seeing the light, of seeing shiva and shakti as one, of the importance of freeing one's own self.

*'Wear the robe of wisdom,
Brand Lalla's words on your heart,
Lose yourself in the soul's light,
You too shall be free'*

Medium/ Materials:
discarded wooden sculpture
discarded chair seat
jacquard weaving discards
metal mesh scrap
brass jewellery scrap
metal scrap
contemporary lac and mirror work



DESI GULAB II

38H 25W 9D (INCHES)

Women make up half the world, and as they dream of a culture of Equality, they must learn to embrace their own body cycles... Honoured here with roses, eternal symbol of womankind.

Metal roses in spiral patterns for the need for journeying within, and to symbolise the nature of the journey.
Red rose petals on top embracing the elongated shapes with the mirror for reflecting/ seeing /speaking up and about our body parts and their ways. Black roses for the need to share the wisdom of ancient women, like that of Lal Ded, in memory of all those gone by who were never recognised...

Medium/ Materials:
scrap metal mesh
embroidery thread
buttons
antique wooden buttermilk churner
mirror

SPINE GROOVE

51H 12W 5D (INCHES)

The body sings when the spine is awakened, the kundalini awakened.

The idea of awakening is channelled through the spine. The idea of 'growing a spine' should come from there too. One of the 7 boxes is with 33 vertebrae, all the others are still growing.

7 boxes for as many notes in music and chakras in our body. X-rays as a reminder that looking deep inside is the only way to learn...

(We camped in a Deodar grove during our trip to Kashmir. After a few days of a hard trek, to camp within trees was a sublime experience : the deodars sang to me! The realisation that being within nature is the best song to groove to... Ritu)

Medium/ Materials:

wooden boxes, polished shells, ceramic electronics scrap , dried palms, plants, flowers , metal flowers from scrap, found clamp dyed textiles



JASMINE GARDEN

62L 26.5W 1.5D (INCHES)

"And the most exalted experience cherished by the tantric philosophy, the overcoming of all binaries and ascension to a state of transcendence: metaphorically embodied by Shiva and Shakti intertwined in sexual union"-

Tantra and the Vakhs of Lalla are locked together.

Pellets in smaller triangles with a 'chakravayuh' in their center for men at war, divided and power seeking.

The other side with the seeds joined together as a force with endless possibilities.

There can be no creation without both masculine and feminine.

The circle of fertility in the centre filled with grains of rice - a woman's crop, where success is based on shared resources.

The red spread for the desire of a feminine culture.

*"I, Lalla, came thru the gate of my soul's jasmine garden
And found Shiva and Shakti there, locked in love!" (68)*

Medium/ Materials:

A 'found' tie&die 'Guddri' textile, air gun pellets, cowrie shells, brass wires used in jewellery making, embroidered snakes, rice





CIRCLING BACK

28W 36H x 2D (INCHES)

Tracing Lalla's feet across the regions she roamed :
She was from Pampore, where the saffron fields are.
Topographical drawings of the region with the centre firmly
in the red circle...
- coming back home to yourself!

*"Love-mad, I, Lalla, started out,
Spent days and nights on the trail.
Circling back, I found the teacher in my own house."*

Medium/ Materials:
vintage ledger paper
scrap jewellery
base of stool
wooden frame with bone inlay
Lalla's feet are of lac



ATTUNE

28H 36W 2D (INCHES)

*"See how he gets under your skin, inside your bones
If you can't see him while you are alive
Don't expect a special vision once you are dead."*

Looking for forests within, and tuning in to heal ourselves.

Healing comes from nature.

The journey inwards comes with its share of darkness.

Aim to see the skeletons in the dark recesses of the body - and then tune into forests - with the sounds of birds, running streams, rustling leaves - and be guided towards your own true nature...

Medium/ Materials:

vintage ledger papers

used watch parts

rice

acrylic paint

scrap radio parts

scrap metal chains

resin

wooden frame with bone and brass inlay



MIND-HORSE

27Di x 2.5D (INCHES)

*"My mind-horse straddles the sky,
Crossing a hundred thousand miles in a blink,
It takes wisdom to bridle that horse,
He can break the wheels of breath's chariot."*

The mind is a powerful stallion, capable of all kinds of feats. The idea is to be able to control/ bridle the horse through breath and move it towards the 1000 petalled crown chakra.

Lalla refers to the mind-horse in many of the 'vakhs' and the need to control it as she guides you towards higher consciousness.

Medium/ Materials:
discarded table top
discarded mirrors
scrap brass jewellery
old film



MY OWN SECRET

30Di 1.3D (INCHES)

*"I stumbled on my own secret there
And flowered, a lotus rising from a marsh"*

Flowering, maturing, blooming- reaching your zenith!

Pine cones, snakes, dried cockscomb (used for red food colour in Kashmir), snake skins : all from the land of Lalla integrating her song.

Medium/ Materials:
discarded table top
Kashmiri pine cones
dried cockscomb flowers
found snake skins
discarded mirror,
discarded watch parts



UTTERANCES

12L 6.5W 2D and 8L X 5W X 1.5DA (INCHES)

" Rush past the words to embrace the spirit"

" A note of advice, rebuke or provocation, or an ironic wake up call for those who miss the subtle point of a masters direction"

Yantras are like spiritual prescriptions or spaces of magical intent which take central space in these tablets.

Never forget the importance of vocalising intent and placing it within the yantra for manifestation.

Medium/ Materials:

found wooden tablets (presumed to be chopping boards for a bar)

bone inlay

gold leaf

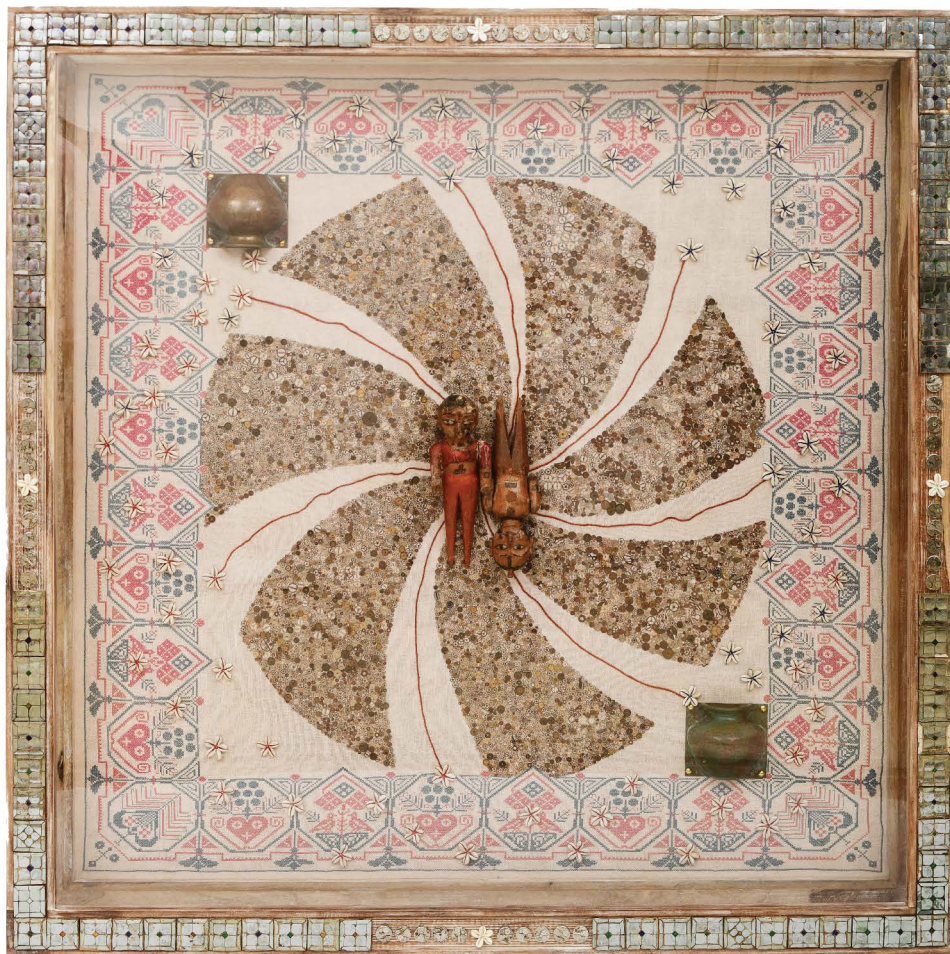
clock bits

metal discards

'found' dead insects

buttons

bits and bobs



OCEAN ANEW

60H 60W 6D (INCHES)

"these souls are trapped in the cycle of rebirth, and must redeem themselves by making the effort of self perfection."

The cycles of life will continue but we must dance/ spin our way toward a new equal space.

We reflect on Lalla's words, with complications on every corner, churning for an Ocean Anew!

"New mind, new moon.

I've seen the ocean made new." (117)

Medium/ Materials:

cross stitched tablecloth from a flea market in Athens

found antique wooden dolls

watch parts

copper wires

antique mirror tiles

discarded watches

THIS FAR

120L 33W (INCHES)

The journey for women, "This Far".
They burried us, they didnt know we were seeds!

Warrior Women : from the tribe of 'Wonder Woman', whose ammunion is the pen!
Gone is the need for a woman's voice to be anonymous : she must be heard as she battles towards the Feminine
Awakening.

*"I've gone into the forest and wrestled with the lion
I didn't get this far by teaching one thing and doing another" (111)*

Medium/ Materials:
found textile with 'Wonder Woman' print, nibs
embroidery threads, Mashru border





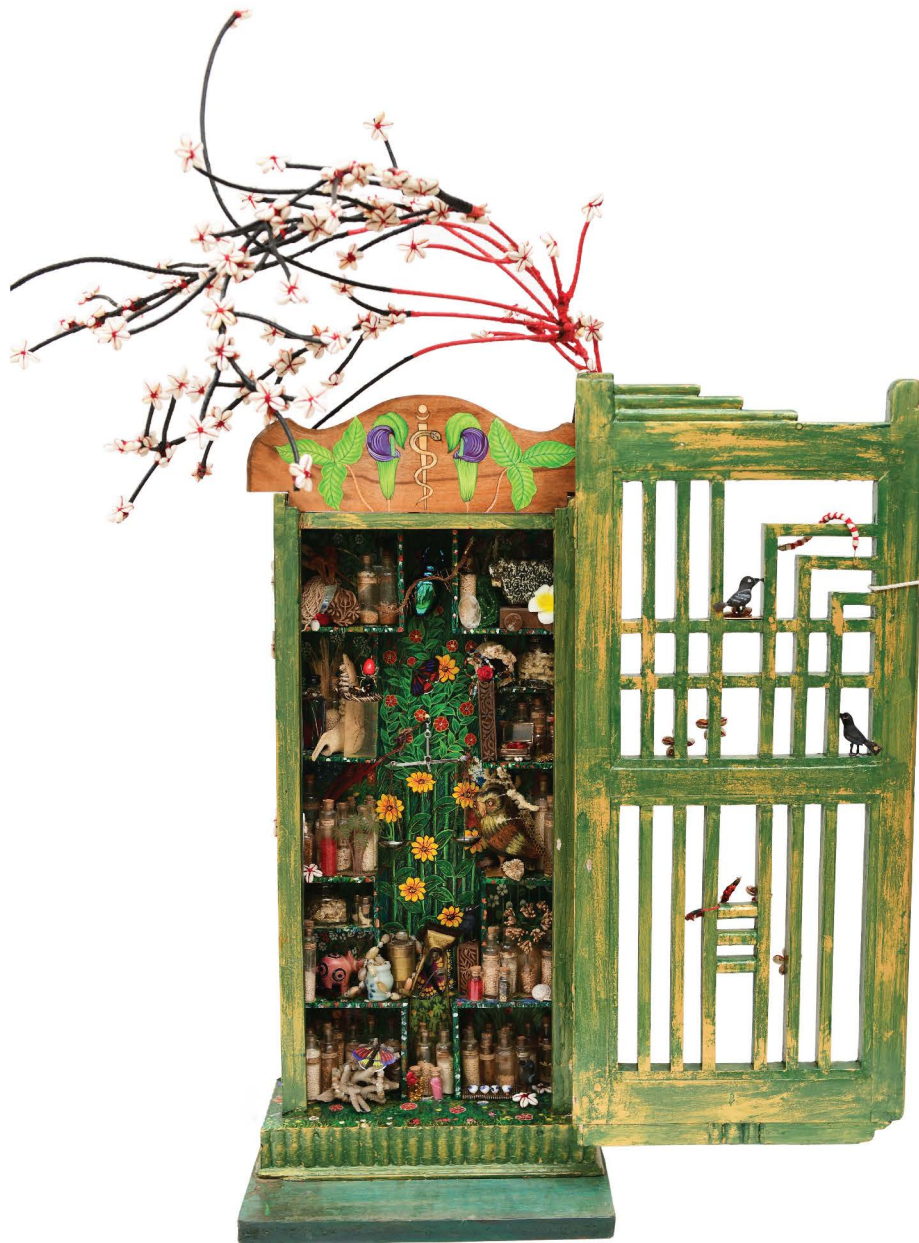
RESILIENCE

26H 36W 2D (INCHES)

*"Resilience: to stand in the path of lightening
Resilience: to walk when darkness falls at noon
Resilience: to grind yourself fine in the turning mill
Resilience will come to you"*

The journey inward does not see gender; enlightenment is neither Shiva nor Shakti. The churning within - through thick and thin - repeating, putting one step in front of the other, highlights the importance of finding that time and space to really listen.

Medium/ Materials:
discarded table top
original churning stick
lac and mirror wor
acrylic paint
embroidered scraps



THE CURE

57H 25W 16D (INCHS)

Nature as guide, guru and healer :
To speak of the many women burnt at the stake
because they were unconventional healers -
a witch's medicine cupboard, through her garden
gate.....

*"I am sick, the world is my disease,
And you are the cure, and you and you and you
and you."*

Medium/ Materials:
discarded window panel
scrap wooden shelf
cowrie shell flowers
waste metal
discarded glass bottles
found bones
odds and ends



AFLAME

With the red thought of fire that burns

48H 3W 15D (INCHES)

(the title comes from words used by Richard Temple for Lal Ded's writing)

Lal Ded was influenced by Tantra and refers to it in many of her vakhs.

Inspiration here is taken from Buddhist Tantric imagery of Dakini, a female messenger of wisdom.

She is dedicated to female teachers and practitioners as shining examples of dedication, compassion and realisation.

A woman who understands the Power within her through the mastery of breath, can then reveal the magic that is hidden within - and finally be a Dakini...

Medium/ Materials:
found wooden sculpture
scrap jewellery
waste acrylic sheets
metals scrap
brass back scratchers



SHRINES

18W 28H 5D (INCHES)

A MUMBA DEVI

(with gratitude to the Goddess of Mumbai for raising the WOLFs!!)

Using the craft of Tazia to outline the cityscape as the birds of Bombay - the crows - loom large.

The 'Goddess in Glass' who absorbs all the colours and lets each one be as they desire.

Medium/ Materials:
discarded bangle box
found relief glass figurine
bamboo structures through the art of Tazia



LILY VALLEY

8H x 5W x 1.5D (INCHES)

Unending rows of Calla Lilies in bloom : this vision of Kashmir inspires offerings to the 'Goddess'. Buttons for the connectedness of all things - and the Collective Conscience that guides you to a Higher Order

Medium/ Materials:
discarded clock box
scrap metal mesh
scrap buttons
chillums
black glass beads
resin
copper wires
wooden object from cha-cha stick



SHIVA SHAKTI

37H 18W 5.5D (INCHES)

Roses surround the glowing Goddess.
The snake twirls around, inside and out.
She breaks through the world with a mighty Force!

Medium/ Materials:
discarded bangle box
scrap metal
wooded object from chaach stick
mirror work and lac snake with Avaz Modammad
vintage papers, gold varkh
flowers from scrap metal
clock parts



MIND-LIGHT

66H 14W 14D (INCHES)

Laila impressed upon the importance of a command over the mind-horse, represented here by a saddle as a way to control the horse.

Blooms surround the saddle and light fills up the space - which is what happens when you are able to control the breath...

Medium/ Materials:
discarded saddles
flowers from scrap metal
found objects
parts of a vintage chandelier
iron frame

PRESENTED BY

BARO MARKET

Baro Market champions original artwork from people who tell stories that strike a chord in all our lives. Contemporary, traditional or tribal - the art is full of soul, is authentic and easily becomes a part of your own story. We have been working with WOLF for a long time and this is the eighth show in our journey together.